



GROWING
GLOBAL
PARTNERSHIPS



At a Glance

www.selectSBCounty.com

Rev. June 2022

GEOGRAPHY

20,160
SQUARE MILES
(52214.2
SQUARE KM)

Local Market of
23
MILLION PEOPLE
(within 3-hour drive time)

24
INCORPORATED CITIES

\$1+
TRILLION GDP
(within 3-hour drive time)

NEARLY
900+
FOREIGN OWNED
ENTERPRISES (FOE)



TRANSPORTATION



40 MILES (64KM)
FROM
LOS ANGELES & LONG BEACH
SEAPORT

3 MAJOR
AIRPORTS

3 MAJOR
INTERSTATE
HIGHWAYS

2 MAJOR
RAILWAYS

EDUCATION + WORKFORCE

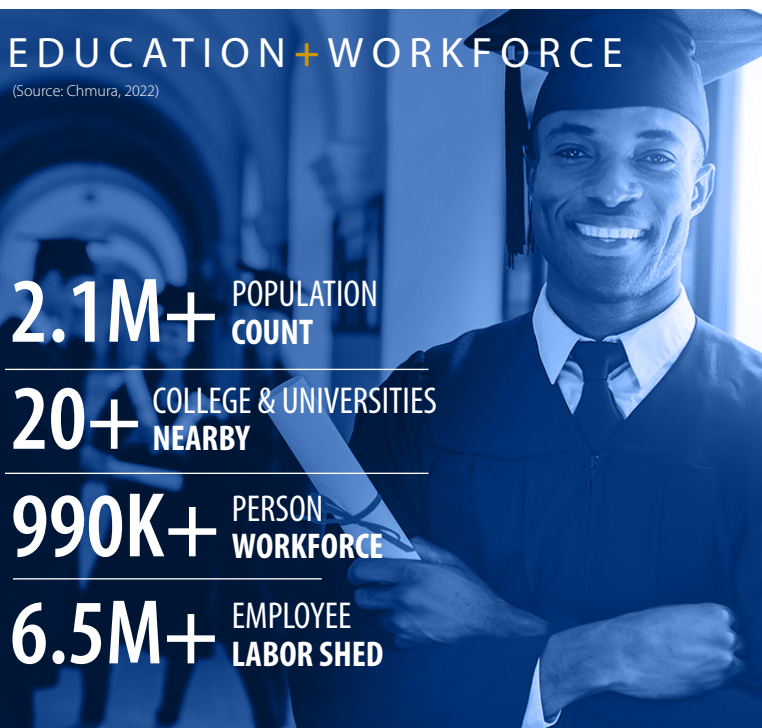
(Source: Chmura, 2022)

2.1M+ POPULATION
COUNT

20+ COLLEGE & UNIVERSITIES
NEARBY

990K+ PERSON
WORKFORCE

6.5M+ EMPLOYEE
LABOR SHED



DEMOGRAPHICS

(Source: ESRI BAO, 2022)

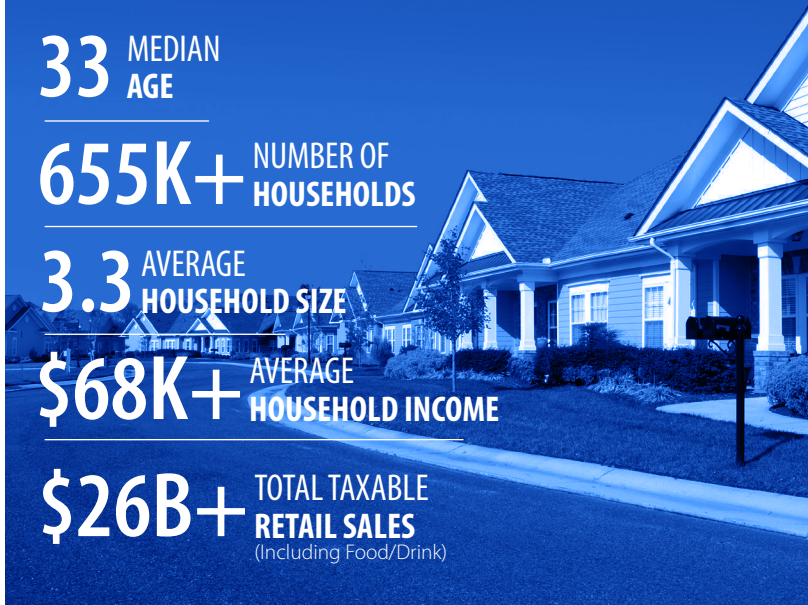
33 MEDIAN
AGE

655K+ NUMBER OF
HOUSEHOLDS

3.3 AVERAGE
HOUSEHOLD SIZE

\$68K+ AVERAGE
HOUSEHOLD INCOME

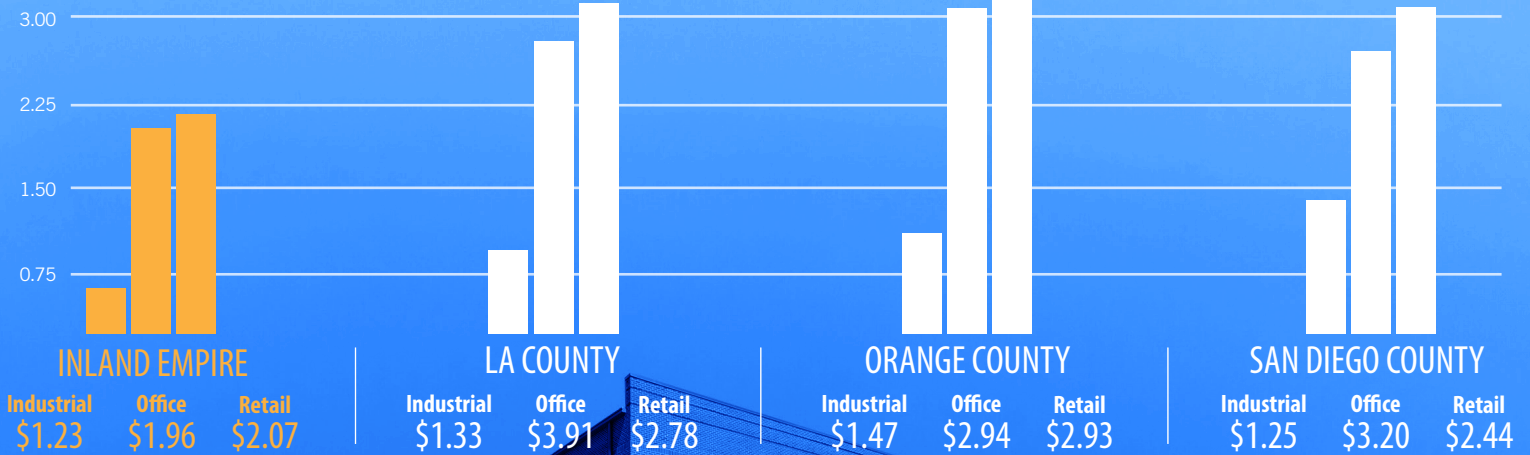
\$26B+ TOTAL TAXABLE
RETAIL SALES
(Including Food/Drink)



COST COMPARISON

Asking Lease Rates Per Square Foot per Month Inland Empire vs. Coastal Counties

(Source: CBRE, 2022 Q1)



RECREATION

ONTARIO MILLS®
A SIMON CENTER
CALIFORNIA'S LARGEST OUTLET &
VALUE RETAIL SHOPPING
DESTINATION

4
NATIONAL PARKS
PRESERVES FORESTS

6
MAJOR
SKI RESORTS

9
LARGE REGIONAL
PARKS



SAN BERNARDINO COUNTY YOUR PARTNER IN BUSINESS

Human Resource Hotline: (877) 282-3763

Market Analysis Assistance

Free Project Consultation And Facilitation

Employment Recruitment Services

Site Selection Assistance

On-the-Job Training Funds

Customized Training Programs

Layoff Prevention Services

Labor Market Services

Permitting Assistance

America's Job Center of CA

Referrals For External Business Resources

Training and Education Services

San Bernardino County Economic Development Department

290 North D St. Suite 600, San Bernardino CA, 92415

(909) 387-4700 info@selectsbcounty.com www.selectsbcounty.com

BOARD OF SUPERVISORS

Col. Paul Cook (Ret.)
First District Supervisor

Janice Rutherford
Second District Supervisor

Dawn Rowe
Vice Chair, Third District Supervisor

Curt Hagman
Chairman, Fourth District Supervisor

Joe Baca, Jr.
Fifth District Supervisor

Leonard X. Hernandez
Chief Executive Officer